

Rail holidays of Italy

Expressions



Rail holiday to Lake Como



Rail holiday to Lake Como

9 NIGHTS / 10 DAYS

Lombardy

Lake Como

Bellagio



For a relaxing journey, travel by train to beautiful Lake Como, located just under two hours drive from Milan in the foothills of the Alps. Set entirely within the region of Lombardy, Lake Como's azure waters are set against the glorious rugged scenery of the forested Alpine foothills. All along the shore, Lake Como is dotted with pretty villages, elegant historic villas and extraordinarily beautiful gardens which are easily reached by ferry and hydrofoil. You can take the Eurostar from London to Paris, before continuing on an overnight train to Milan. A private car can then take you to Lake Como, where we recommend staying at either the Grand Hotel Tremezzo or Grand Hotel Villa Serbelloni in Bellagio. You can then either return directly on the sleeper train from Milan, or for a more scenic journey you can take day time trains via Turin or see the Swiss Alps, perhaps breaking the journey overnight in Lausanne, Geneva, Zurich or Lucerne.

PRICES

From £2,100 per person

Price based on two sharing a double or twin room.

First class rail travel can be added for a supplement. You can also upgrade to a different hotel for a supplement.

DATES

This rail holiday can be arranged throughout the year. Timings can vary depending on the month and day of the week. For more information regarding rail services to and within Italy, view our train guide.

WHAT'S INCLUDED

- Rail travel on all trains including the Eurostar (first class can be booked at a supplement)
- Double sleeper compartment on Thello sleeper train in both directions
- 7 nights' bed and breakfast on Lake Como at the Grand Hotel Villa Serbelloni
- Private return transfers from Milan train station to your hotel

WHAT'S NOT INCLUDED

- Optional extra nights
- Transfers in Paris
- Meals other than breakfast at the hotels
- Early check in or late check out at hotels - though we can arrange this on request
- Supplements for alternative route options
- Any services not mentioned

DAY ONE: Take the sleeper train from Paris

Start your rail holiday on an early afternoon Eurostar train to Paris, where you arrive at about 6pm before changing stations and continuing on the Thello sleeper train to Milan.

DAY TWO: Milan to Lake Como

Arrive in Milan at about 6am, where a private car with driver will be waiting to take you to your hotel on Lake Como where you spend seven nights.

DAYS THREE TO EIGHT: Lake Como

Lake Como has the most variety of all of the Italian Lakes with pretty villages, ports and villas in exotic gardens. Enjoy your time here at leisure, doing as much or as little as you like around Lake Como. We can include a hire car, if you so wish, giving you further flexibility to explore the surrounding area. Bellagio occupies a stunning location on a promontory that divides Lake Lecco from the southern side of Lake Como. Littered with its lakeside cafes, ancient chapels, winding lanes and peerless Renaissance gardens such as those at Villa Melzi, Bellagio tends to steal the brochure headlines, and rightly so. Dubbed The Pearl of the Lake, Bellagio is one of the most beautiful towns not just in Lombardy, but in Italy itself. From Bellagio, you can even take kayak tours of the lake to gain spectacular views of the Amalfi-like, cliff-hugging villages, as well as the mountains crowning the water. All around the lake, Neoclassical villas, belle époque houses and erstwhile fishing villages tumble right down to the water's edge, with Varenna, Cernobbio and Tremezzo in particular worth as much time as you can spare. As for its towns, the 2,000-year old walled city of Como is often overlooked, but has a superb medieval centre dominated by a magnificent Gothic cathedral. Best of all, car ferries and vaporetti criss-cross the lake throughout summer, so just getting around the lake itself becomes a thrillingly panoramic pleasure cruise.

RETURN OPTION 1 - DIRECT SLEEPER

DAY NINE: Take the sleeper from Milan

After checking out of your hotel, a car will take you back to Milan station where you catch an overnight sleeper train to Paris, departing at about 11pm.



Lake Como from Grand Hotel Tremezzo

DAY TEN: Rail from Paris to London

Arrive in Paris at about 10am. Change stations in Paris and end your rail holiday by taking the midday Eurostar back to London.

RETURN OPTION 2 - VIA TURIN

DAY NINE: Return by rail via Turin

A private car will take you back to Milan where you catch a local train at 9am. Change in Turin, and board the high speed TGV service to Paris Lyon, allowing you to admire the developing scenery as you head northwards through France. Change stations in Paris and you board the Eurostar which gets you back to London around 7.30pm.

RETURN OPTION 3 - VIA

LAUSANNE

DAY NINE: Return by rail via

Lausanne

An early car takes you to Milan for just after 8am, where you board your train to Lausanne. The journey takes you along the shores of Lake Maggiore and then enters the Swiss Alps through the stunning Simplon Pass which links northern Italy to the town of Brig. Your train passes directly through and follows the course of the Rhone down to the shores of Lake Geneva. A simple change of trains in Lausanne, and you continue to Paris on the high speed TGV service. Take an early evening Eurostar service and you arrive back into London around 7.30pm.

OPTIONAL

It is possible to add extra nights in any of these destinations.

HOTELS

Details of the hotels in Italy can be found below.



LAKE COMO

Grand Hotel Tremezzo 5 star

The property is a traditional grand hotel overlooking the lake, giving superb views across to Bellagio and the stunning Grige mountains. This part of the lake is called the Riviera delle Azalee and the hotel is surrounded by the white and pink blossoms of these flowers in the late winter and early spring. The palace is a fine example of Liberty-style architecture and with over 100 years of history, it offers luxurious accommodation and excellent value for money. The rooms and suites are situated across five floors and guests can enjoy use of the hotel's three heated swimming pools. The hotel offers a choice of a formal a more relaxed restaurant.

Grand Hotel Villa Serbelloni 5 star deluxe

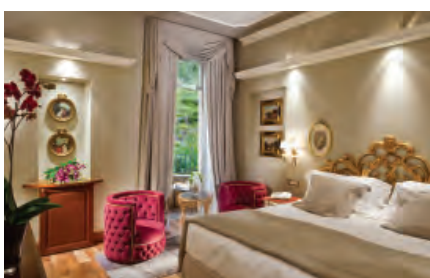
The Villa Serbelloni is one of the oldest and most elegant hotels on Lake Como and offers incredible panoramic views of the lake from its privileged position in Bellagio. In its lush gardens Mediterranean and subtropical plants flourish in the pleasant microclimate around the lake. There are 95 rooms and suites furnished in a traditional style, all of which are fitted with air conditioning and free wifi. The hotel boasts two good quality restaurants, the Mistral and La Goletta, or guests can choose to eat locally in Bellagio.



Grand Hotel Villa Serbelloni, Bellagio



Grand Hotel Tremezzo



Park view superior room at Tremezzo



Lake view superior room at Tremezzo



Lounge at Villa Serbelloni

MAP OF TOUR LAKE COMO BY TRAIN

The map below illustrates the route outlined in this touring itinerary, with overnight stops and places of interest highlighted.



GENERAL INFORMATION

This tailor-made touring holiday is one of several suggested touring holidays we can offer you exactly as it is but also with any alterations you might want including extra nights in one or more places or adding in extra places. All our tours can be extended so that you can include a longer stay in one mountain or lake resort too, perhaps at the end of the itinerary. Do call to discuss the options with our travel consultants.

OUR TOURS

Our rail tours are for individuals travelling on their own or in their own family group. You do not join a group and you are not escorted.

FLEXIBLE ARRANGEMENTS

Our arrangements are very flexible in that you choose to travel on any day you want, subject to availability of trains and hotels. As mentioned above, additional nights can be added at any point.

EUROSTAR

A rail holiday to Italy starts with a journey by Eurostar from London St Pancras, Ebbsfleet or Ashford stations in the UK to either Paris Gare du Nord or Lille Europe. In summer months there are direct trains on Saturdays from London St Pancras to Avignon with no change required.

Eurostar offers almost hourly departures every day, allowing you to travel from the centre of London to the centre of Paris on the same train in three hours. Not all trains stop at the Ebbsfleet and Ashford stations in Kent, but parking is plentiful at both stations and it allows you to avoid London.

Check-in is 30 minutes prior to departure, customs formalities are completed before boarding and there is no limit to the amount of baggage that can be taken on board. The Eurostar trains themselves have 8 coaches which are split into Standard Class, Standard Premier and Business Premier as well as 2 cafeterias. Standard Premier customers are served a light cold meal and enjoy a more spacious environment than Standard Class, while Business Premier customers receive a hot meal and unlimited beverages as well as lounge access.

TRAIN TIMES

We have planned our itineraries based on train times that work day by day at the time of planning which can be up to a year before you travel. Usually train times stay more or less the same every day, season by season. The times we have planned will be discussed with you at the time you enquire about the holiday and they are detailed to you in your written holiday quotation. It may be that the timetable changes between the planning of the itinerary and when you come to book but we can always adjust the itinerary to suit the actual train times and any requirements you have for particular times of travel.

FIRST OR SECOND CLASS

We will automatically include travel in second class but lots of our clients do upgrade to first class service. On Eurostar this is called Premier Standard for leisure travellers as it gives you an upgraded on-board service and more spacious seating but without paying for the fully-flexible business tickets. On the Inter-city trains, upgrading to first class gives you more spacious seating with increased legroom. The price of upgrading varies from route to route but is something that is not always proportionately a lot more on the price of the overall holiday, so well-worth considering.

TRANSFERS

Transfers in Paris between stations and from the station to each hotel are not automatically included in the price of the holiday. In Paris most clients choose to take a taxi between the stations rather than go on the Metro but we can arrange a private car with driver to take you in between. This is quite useful if you are a family group that can't fit into one Paris taxi.

PRICE INFORMATION

This tailor-made touring holiday is one of several suggested touring holidays we can offer you exactly as it is but also with any alterations you might want including extra nights in one or more places or adding in extra places. All our tours can be extended so that you can include a longer stay in one mountain or lake resort too, perhaps at the end of the itinerary. Do call to discuss the options with our travel consultants.

OUR PRICES

The sample prices mentioned in this leaflet are generally a 'from' price based on the cheapest season of travel. However, train fares and hotel rates can change (up and down depending on offers), so we give you an accurate price for your holiday when we provide you with a quotation. Our sample prices should be used as an indication of how much a particular combination will cost and to show the differences on average between the hotel categories on offer.

PRICE INFORMATION IN MORE DETAIL

Grand Hotel Tremezzo

From £3,850 per person for first class rail travel

From £3,760 per person for second class rail travel

Grand Hotel Villa Serbelloni

From £3,360 per person for first class rail travel

From £3,270 per person for second class rail travel

Prices based on two sharing a double or twin room and return on the Thello sleeper train.

What's included?

7 nights' bed and breakfast in a Prestige Park View Room at Grand Hotel Tremezzo, or 7 nights' bed and breakfast in Classic Park View Room at Grand Hotel Villa Serbelloni.

First or second class travel on the Eurostar (as above)

Double sleeper compartment on Thello sleeper train

Private return transfers from Milan to the hotel

What's not included?

Meals other than breakfast at the hotels

Transfers in Paris.

Early check in or late check outs at hotels, although we can arrange this on request.

Supplements for alternative routes

Any services not mentioned above

Expressions

BOOKING CONDITIONS

Our booking conditions apply to all holidays. A copy can be found on our website and a copy is also sent to you with a written quotation and when you make a booking.

FINANCIAL PROTECTION

Expressions Holidays offers full financial protection for all holidays you book with us. If your holiday includes a flight, the ATOL (3076) covers the costs of the holiday. If the holiday does not include a flight, it is the ABTOT bond that protects the cost of the holiday. We are also members of AITO (the Association of Independent Tour Operators) and ABTA.



Expressions Holidays

Lynx House, Pynes Hill, Exeter EX2 5JL

HOW TO BOOK

To make a booking, just phone us on

01392 441275

and we can take you through the details we need and start the booking process. A deposit is required to confirm the arrangements and this can be paid by debit or credit card over the phone. The level of the deposit will be confirmed at the point of booking and will depend on the ticketing deadlines of the rail tickets involved in your booking.